

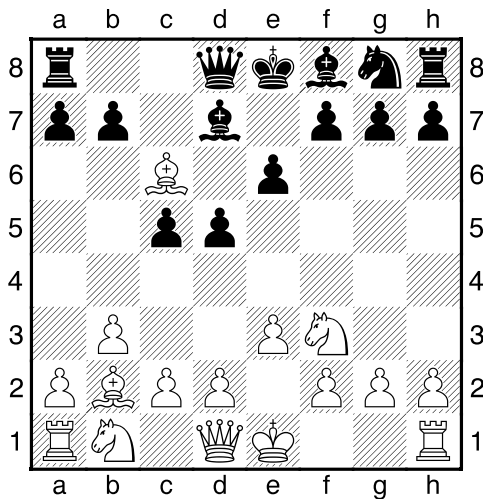
(32) Piet, van Nassau - Theo, Verstappen [A06]

Intern GESS, 23.02.2015
[Deep Fritz 14 x64 (15m)]

[A06: Réti Opening: 1 Pf3 d5]

1.Pf3 d5 2.b3 c5 3.e3 Pc6 4.Lb5 Ld7 5.Lb2 e6 [laatste zet uit boek]

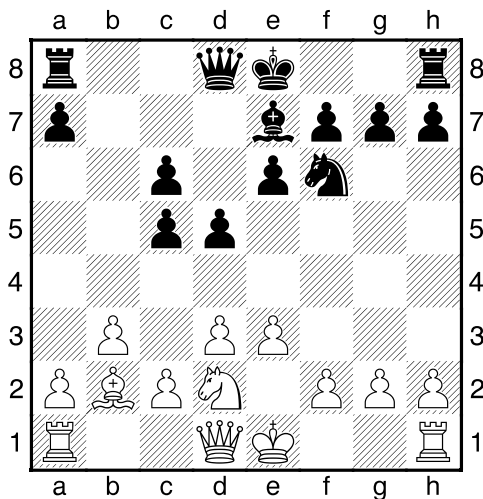
6.Lxc6 [Diagram]



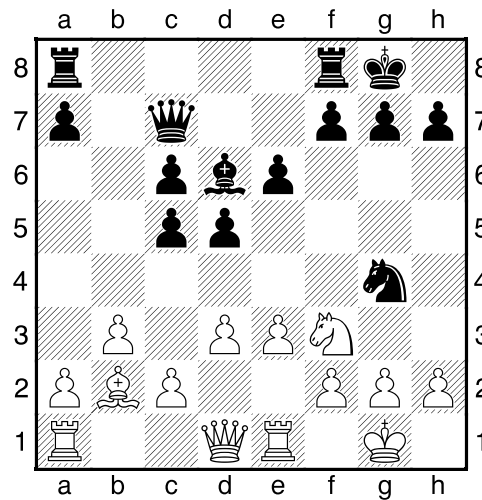
6...Lxc6 [Zwart heeft een loperpaar]

7.Pe5 Pf6 8.d3 [Dekt e4]

8...Le7 9.Pxc6 bxc6 10.Pd2 [Diagram]



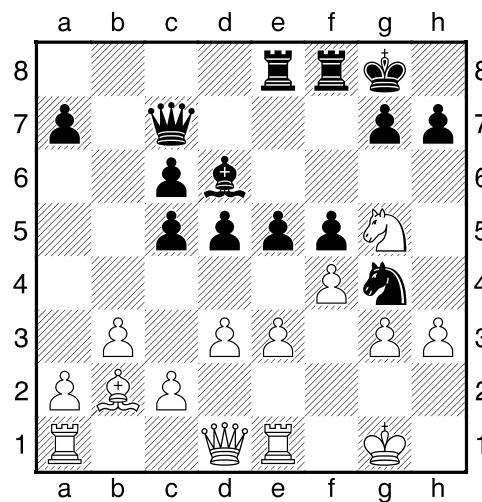
10...0-0 11.0-0 Dc7 12.Pf3 Ld6 13.Te1 Pg4 [Diagram



]

14.g3 [Zekert f4]

14...f5 15.Pg5 Tae8 16.f4 e5 17.h3 [Diagram



Wit dreigt met materiaalwinst: h3xg4]

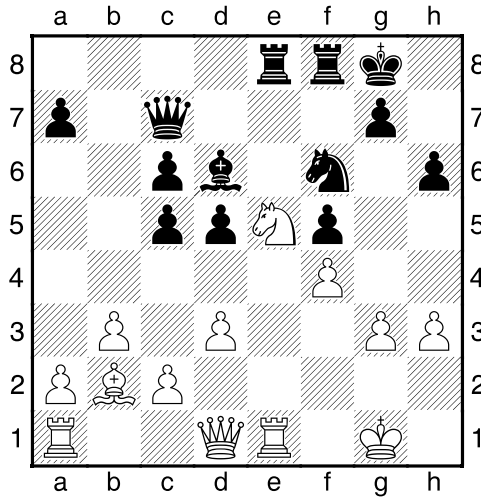
17...Pf6 [17...exf4 18.hxg4 fxe3 19.Df3 fxg4 20.Dxg4 Lxg3 21.Pe6 Df7 22.Dxg7+ Dxg7 23.Pxg7 Te7 24.Ph5 Lf2+ 25.Kh2 d4]

18.Pf3 exf4 [18...e4!? Is een bruikbaar alternatief. 19.Ph4 Dd7]

19.exf4= h6 [Beheerst g5]

[19...d4 20.Dd2=]

20.Pe5 [Diagram]



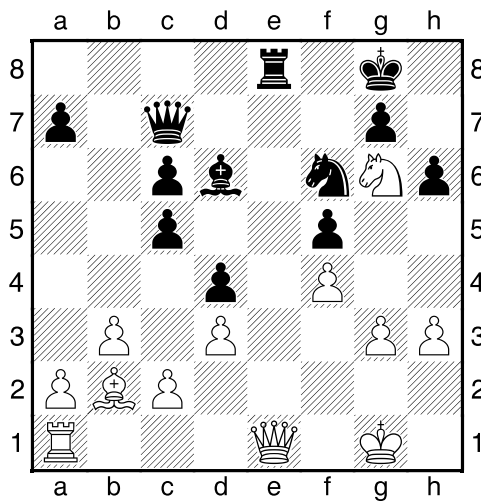
]

[20.Txe8!? Pxe8 21.De2±]

20...d4 [Zwart krijgt meer ruimte.]

21.Pg6 [21.Pc4!?=]

21...Txe1+³ 22.Dxe1 Te8 [Diagram

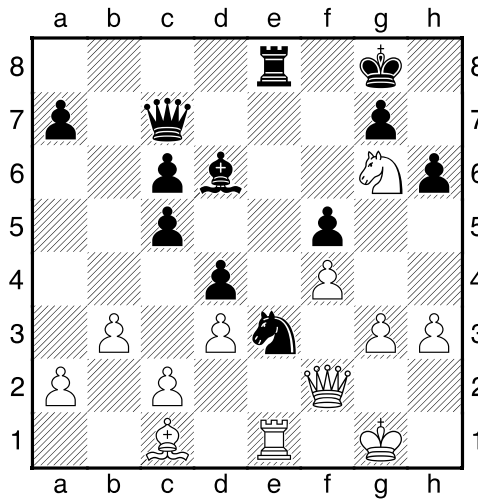


Zwart dreigt met materiaalwinst: Te8xe1]

23.Df2 Pd5 [23...Df7 24.Ph4 Pd5 25.Pg2³]

24.Te1= Pe3 [24...Df7 25.Txe8+ Dxe8 26.Ph4=]

25.Lc1 [Diagram]



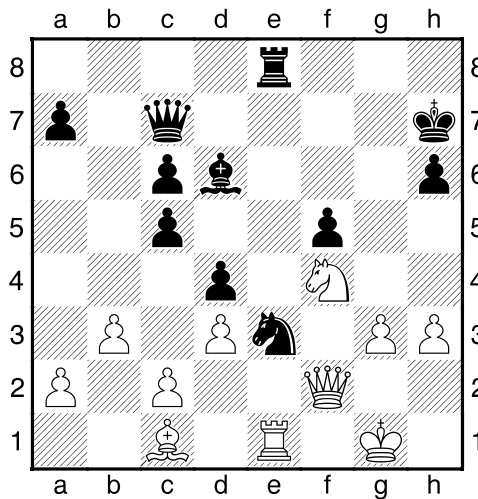
Wit dreigt met materiaalwinst: Lc1xe3]

[25.c3 Da5=]

25...Kh7 [25...Df7!? Ziet er speelbaar uit. 26.Ph4 g5 27.fxg5 hxg5 28.Pxf5 Pxf5 29.Txe8+ Dxe8 30.Dxf5 De1+ 31.Kg2 Dxc1 32.De6+ Kh8 33.Dh6+ Kg8 34.Dg6+ Kh8 35.De8+ Kh7 36.Dd7+ Kg8 37.De6+ Kh8 38.Dh6+ Kg8 39.Dg6+ Kh8 40.De8+ Kh7 41.Dd7+ Kh8 42.Dc8+ Kg7 43.Dd7+ Kg8 44.De6+=]

26.Ph4± g5 [Zwart dreigt met materiaalwinst: g5xh4]

27.Pg2 gxf4 28.Pxf4 [Diagram]



[28.gxf4!?! c4 29.bxc4±]

28...Lxf4= 29.Dxf4

1/2-1/2